

# INSPIRE YOUR WORKPLACE WITH BPEACE

Explore our **REMOTE** and **IN-PERSON**  
**Skills-Based Volunteer opportunities.**

**Bpeace builds bridges to a better life for thousands of families** by creating jobs and equitable economic opportunities in the U.S., Guatemala, El Salvador and Honduras. It all starts with strengthening small and medium-size businesses.

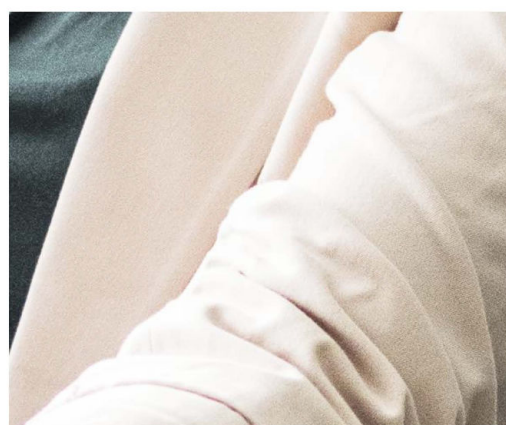
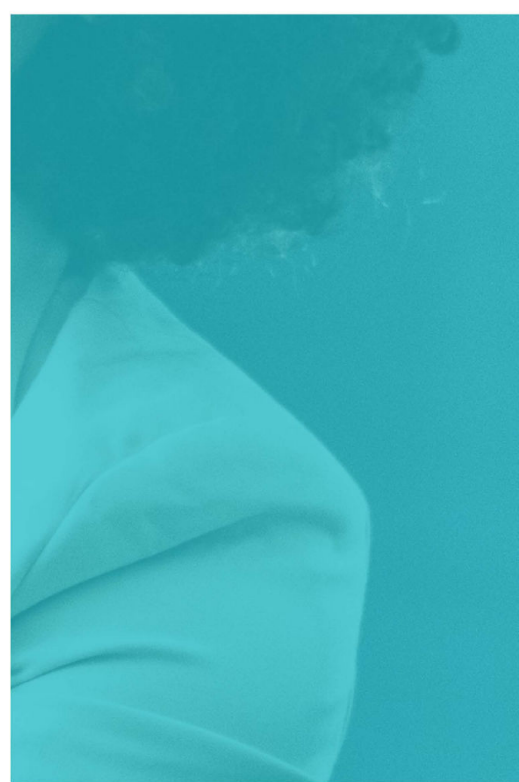
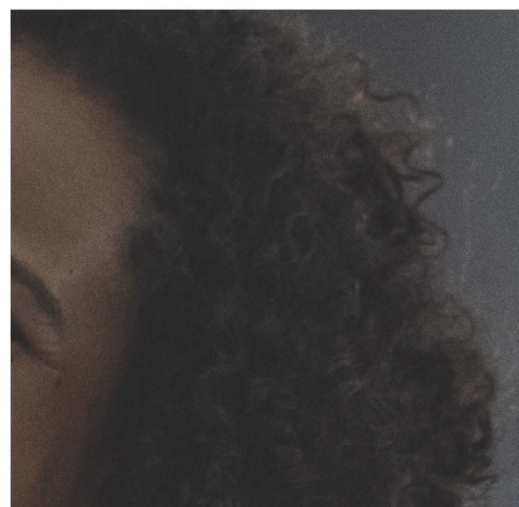
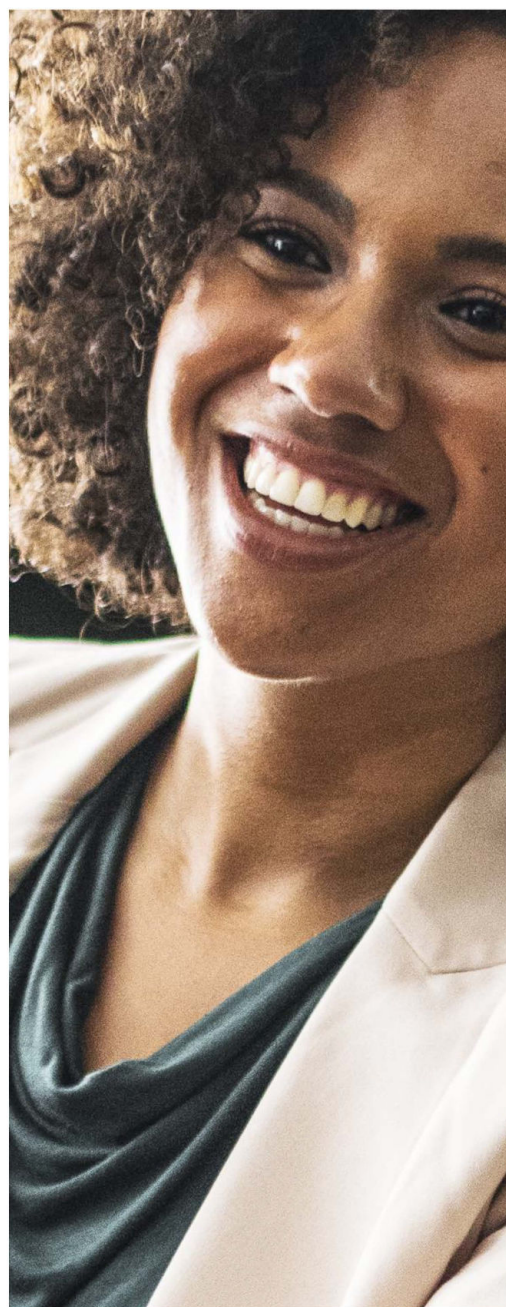
Our network of 600+ volunteers, founders, and corporate partners facilitates substantial change by advancing the economic power of women and minorities and spearheading job creation that strengthens local economies.

**Last year alone more than \$2.1M in pro bono time was invested by Bpeace volunteers, generating \$610M revenue for the local economies.**

When you become a Bpeace partner, **we match your employees with a volunteer opportunity** that makes the best use of their skills and creates the greatest impact.

Connect your team with meaningful workplace volunteer opportunities. In just eight hours, you and your team can lend the skills and expertise needed to make a life-changing difference.

Contact Susy Cheston at [scheston@bpeace.org](mailto:scheston@bpeace.org) to discuss your employee engagement, volunteer and DEI goals.



## Bpeace Partners



Business for Impact  
GEORGETOWN UNIVERSITY McDonough School of Business



## Connect with us!



[bpeace.org](https://bpeace.org)



# GET INVOLVED

Explore the different volunteer opportunities that we have available for your employees – from senior executives to mid-level managers and technical experts to associates. Most of our activities are held on Zoom, but Bpeace welcomes working with corporations that would like to cover the costs of employee travel to Central America or our locations in the U.S.

## Introductory Volunteer Opportunities

Individual volunteer experts contribute to cover the coordination costs of their participation and help support the mission of Bpeace. For corporations that are new to Bpeace, we offer the option to cover the membership costs for 5 employees who will be welcomed into the Skills-Based Volunteer Programs below.

## Skills-Based Volunteer Programs on Zoom

Volunteer opportunities vary depending on the specific projects underway and the industries engaged in the program. There is no limit to the number of volunteers for this membership level. Bpeace prioritizes the needs of the small businesses in our program and matches them with business experts who can meet those needs. Examples include:

Short-term (3-4 hours)	Workshop (6-8 hours)	Long-term (32 hours)
<p>Work with a small business leadership team, supported by Bpeace staff.</p> <p><i>This is a great <b>first assignment!</b></i></p>	<p>Prepare and deliver a 1-2 hour <b>Learning Lab</b> on a topic relevant to the business owners. Volunteers usually spend a total of 6-8 hours including prep time and presentation.</p> <p><i>Industry or technical experts, this is an excellent opportunity for engagement!</i></p>	<p>Work individually or in pairs on a long-term <b>Growth Project</b> that unlocks the business' <b>growth potential</b>. Approximately 2-3 hours per week for 12 weeks when done remotely, or one week in person.</p> <p><i>These projects are well-suited to senior professionals who can offer business advice.</i></p>

## Customized Employee Engagement Activities

Bpeace will work with you to co-create programs, to be selected and adapted from a menu of options. The number of volunteers will vary depending on each program.

Examples include **affinity groups/employee resource groups, custom workshops, hackathon, heritage months and special observances related to DEI or ESG goals, team fundraisers.**